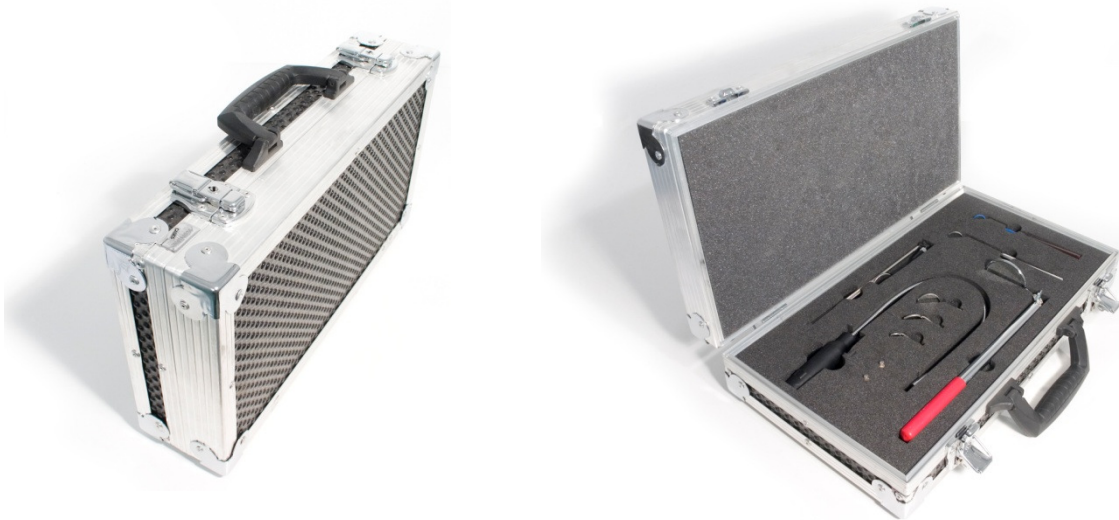




Inspection mirror kit

ELP-Insp

Art-No.: 170638



(Made in Germany)

Following various requests we decided to assemble this set of small inspection mirrors:

The set is fit into a customized carrying case and consists off:

Qty.	Description	Art.-No.:
1 off	Inspection mirror with joint elbow, total length 310 mm, ø 30 mm mirror	170638-02
1 off	Inspection mirror with joint at top, telescopic 250-700 mm, ø 55 mm mirror	170638-07
1 off	Inspection mirror set, swan neck, total length 460 mm, illuminated, ø 30; ø 22 and ø 12 mm mirrors, 1 spare bulb	170638-03
1 off	Inspection mirror, fixed, stainless steel, total length 160 mm, ø 20 mm mirror	170638-05
1 off	Inspection mirror, fixed, plastic handle, total length 310 mm, ø 20 mm mirror	170638-06

Dimensions carrying case: 445 mm x 245 mm x 100 mm,
Weight: 2.750 kg

Specifications are subject to change without notice.